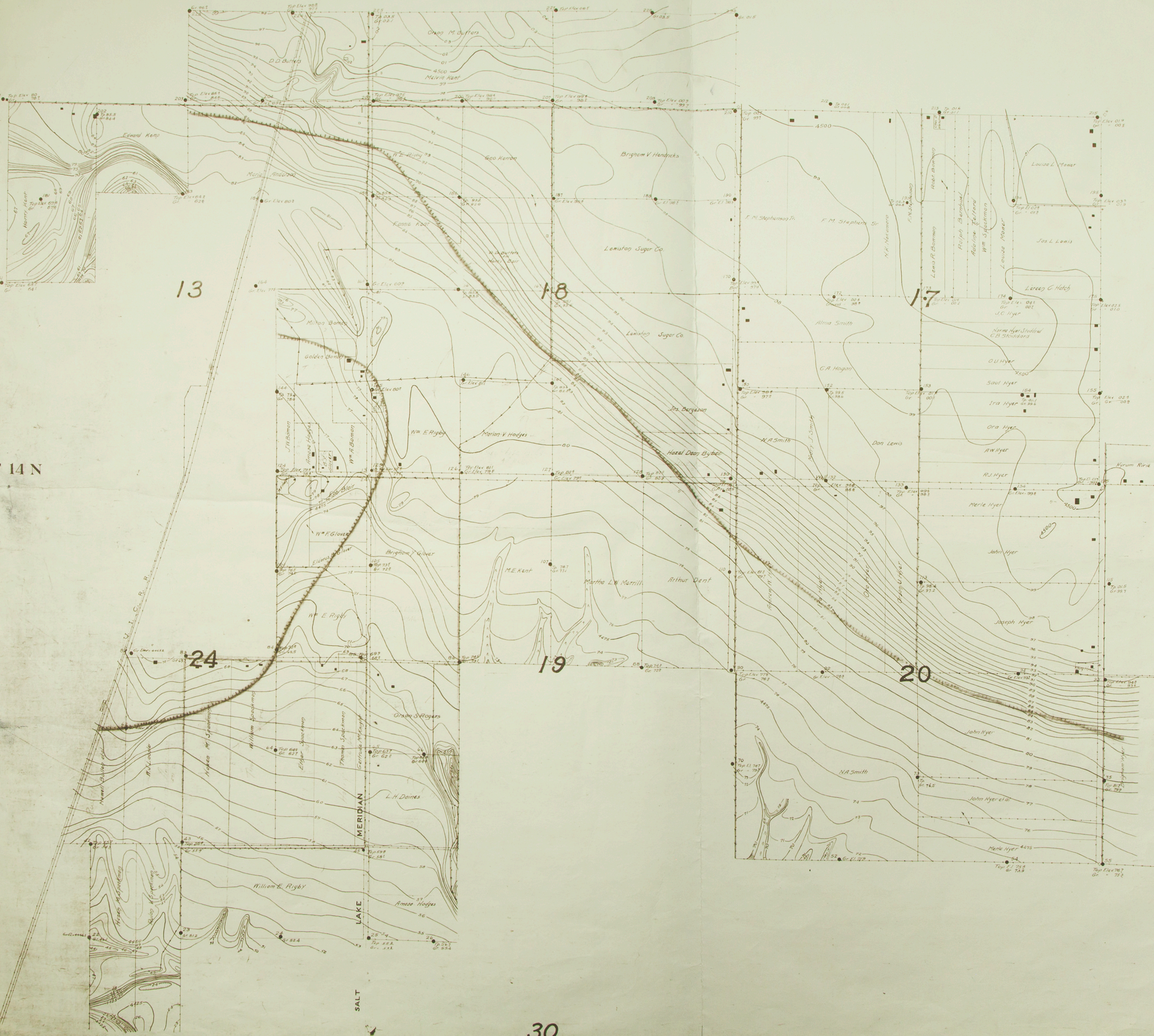


Ut
10610
C.H.S.
Sh. 2

CACHE COUNTY DRAINAGE
DISTRICT No 3 - LEWISTON
CACHE COUNTY, UTAH.
SEPTEMBER - 1921 - SCALE 1" = 400

SUPERVISORS
W.E. RIGBY, ORSON U. HYER, J.W. BOMAN
ENGINEERS
HUMPHREYS BROTHERS, T.H. & L.R.

Sand subsoil
Boundary
clay subsoil



T 14 N

13

18

17

19

20

24

25

R1W R1E

30